

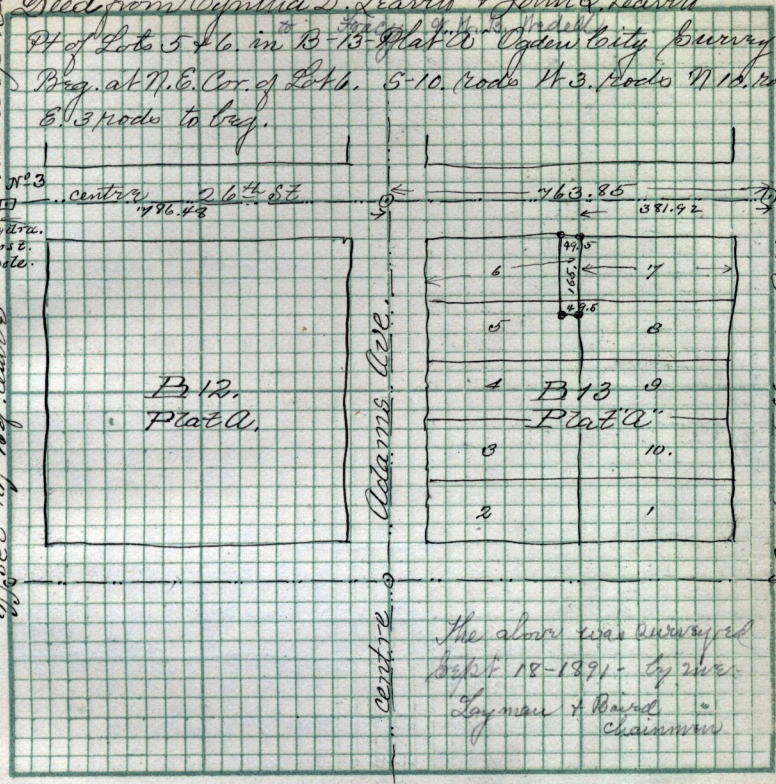
Dep. 18-1891

Deed from Cynthia D. Leavitt & John Q. Leavitt
Pt of Lots 5 & 6 in B-13-Flat W Ogden City Survey
Beg. at N.E. Cor. of Lot 6. S 10. rods W 3. Rods N 15. rods
E 3 rods to beg.

Washington Ave.

N.E. 67.18 Hydran.
E. 11.01 post.
N.W. 43.84 pole.

offset 10' of Wj. center



N.E. 63 Hydran.
S.E. 66 58
C. 0.00
S.W. 48 2
T. 7.2
N. 11.63
Post.

center Jefferson Ave

The above was surveyed
Sept 18-1891- by mes.
Layman & Baird
Chairman

Scale: Dep. 28- Jorath & Gibbons Chains per inch.

may or to John Gibbons - all of Lot 10 - B-4, South Ogden
Survey - Fanny R. James, W. B. Gibbons, & Francis
L. Gibbons to Thomas Gibbons as follows. Beg.
N.W. cor Lot 10, S. 3.80 ch, E 0.66 ch S 74° E 0.65 ch
ch, E 5.38 ch N 0.35 ch N 14 1/4° E 4.54 ch W 6.62 ch
to beg. & all of Lot 5. The same parties also convey
to ~~Francis L.~~ Gibbons, as follows Beg. S.E. cor Lot 10
W 3.35 ch N 24° W. 2.80 ch E. 4.46 ch S 72.66 ch
to beg. Francis L. Gibbons to W. Van Dyke Mortg.